

### CODE

SAA150, SAA151, SAA152, SAA153, SAA154

### DESCRIPTION

Pull Handle

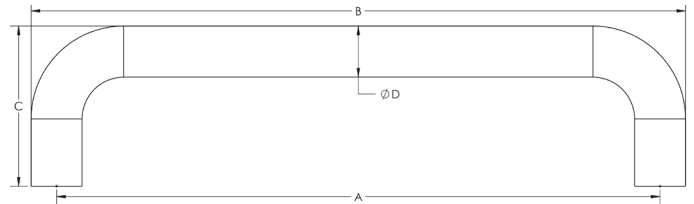
### STANDARDS



### PRODUCT SPECIFICATION

- Aluminium
- F2 anodised
- M8 X 55mm bolt - supplied
- These bolts are only suitable for doors up to 44mm thick

### TECHNICAL DRAWING



### FINISHES

- Satin Anodised Aluminium

| CODE   | A     | B     | C    | D    |
|--------|-------|-------|------|------|
| SAA150 | 150mm | 170mm | 66mm | 19mm |
| SAA151 | 225mm | 245mm | 66mm | 19mm |
| SAA152 | 305mm | 325mm | 66mm | 19mm |
| SAA153 | 425mm | 445mm | 66mm | 19mm |
| SAA154 | 600mm | 620mm | 66mm | 19mm |