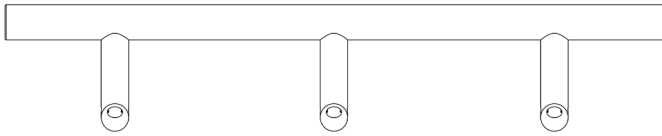


**COMMERCIAL**  
**STAINLESS STEEL**



**CODE**

JSS519C

**DESCRIPTION**

Cranked Pull Handle

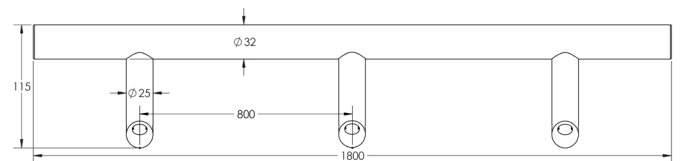
**STANDARDS**



**PRODUCT SPECIFICATION**

- M8 bolt fixing
- Suitable door thickness: 35-54mm
- Corrosion grade 4

**TECHNICAL DRAWING**



**FINISHES**

- Satin Stainless Steel