

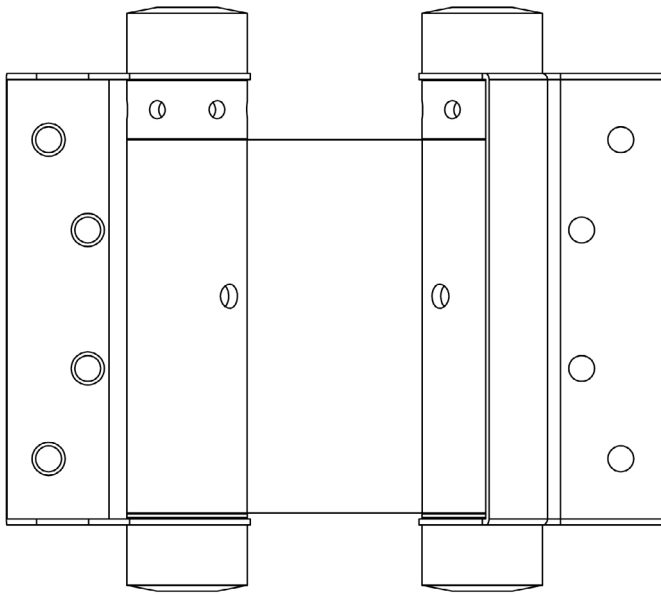
CODE

HB3005-3PB / HG3005-3GY

DESCRIPTION

Double Action Spring Hinge

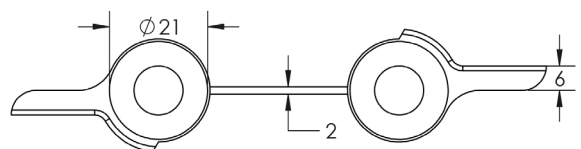
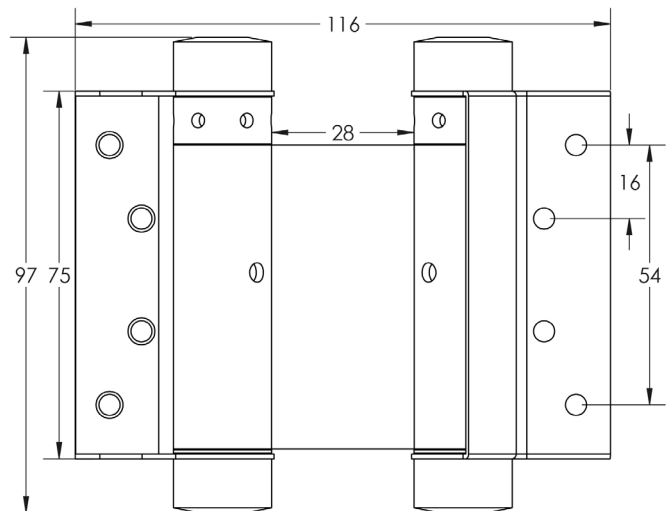
STANDARDS



PRODUCT SPECIFICATION

- Suitable for 15kg doors when using 2 hinges
- Max door thickness 18-25mm
- Max door width 600mm
- *We strongly recommend requesting a sample before committing to any cutting or drilling*

TECHNICAL DRAWING



FINISHES

- Electro Brassed (HB3005-3PB)
- Silver (HG3005-3GY)